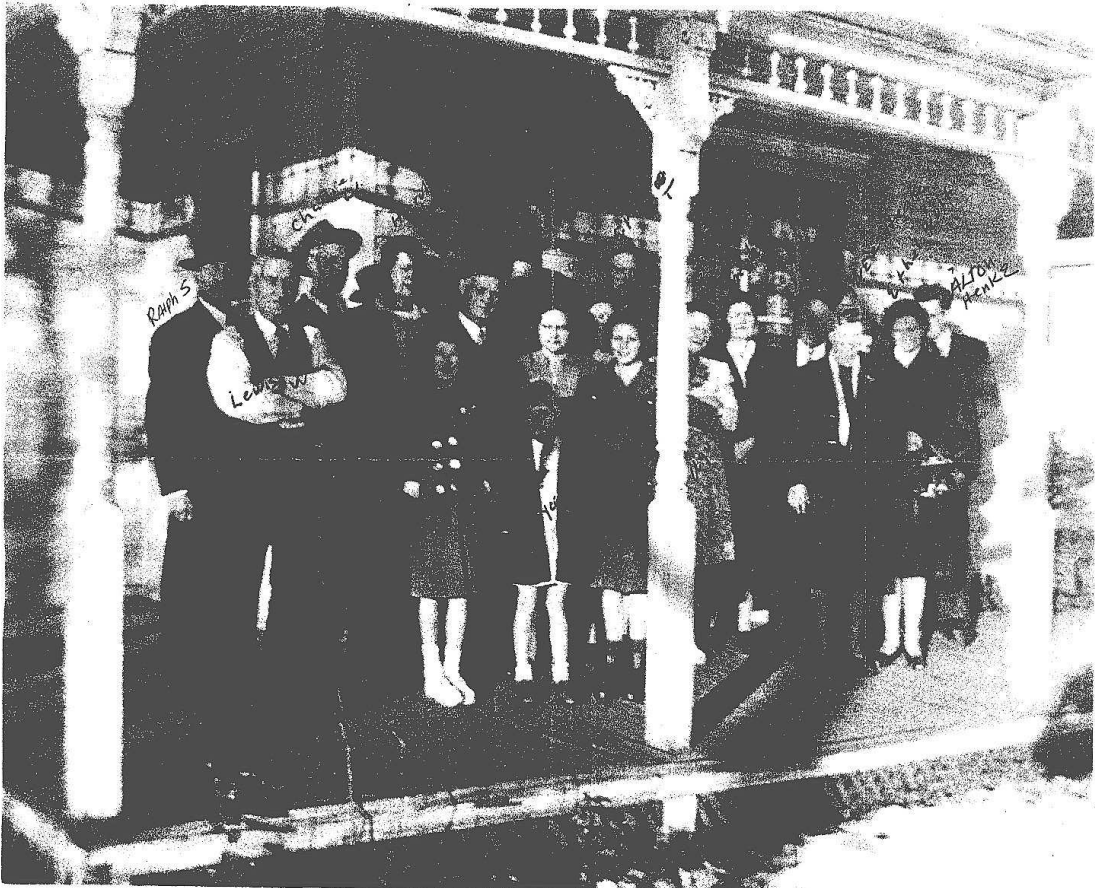


# SOME REMINISCENCES OF EARLY SOUTH DAKOTA

---

**WRITTEN BY:**  
**RALPH SEIPP**  
MAY 17, 1971



## SOME REMINISCENCES OF EARLY SOUTH DAKOTA

I will start the year of 1880, the year I was born. Grandfather Chris Shale came to Dakota Territory on a land excursion from Baraboo, Wisconsin, bringing his three sons-in-law along to Watertown, South Dakota on a Chicago and North Western train and drove out twelve miles S.W. with a land agent and filed on seven-one quarter sections of prairie land, a total of 1120 acres.

Grandfather Chris Shale filed on one quarter (160), his son John on one (Emil Mischke Sr. farm, now owned by Don Mischke). Fred filed on two (where Walter Mischke lives), William Seipp on one (later bought by David Wolf, SS ¼ et-116-54, Codington County where Larry Shelton lives) and Klumpp on one and Heinzsler on another quarter. Then they all went back to Baraboo, Wisconsin. John and Fred Shale then loaded an emigrant car with horses, cows and machinery and went back to then called Dakota Territory.

William Seipp later came from town and filed on two quarters but Grandfather Shale didn't want to live here so my father took Grandfather's quarter as preemption and built the home there. That Winter they built a sod house and barn on the corner of both Fred and John's land holding both as their homesteads.

Dakota was noted for lots of snow and cold weather and coal was scarce so they moved lots of hay, enough to twist for heating the home all Winter. For meat they had plenty of ducks and geese migrating South and Jack-rabbits and the big lakes had good fishing. They hauled the lumber from either Kampeska or Watertown, and had their house built by 1881 when my mother and I, a baby, came to Dakota, each of the men did some breaking of land that fall of 1880 and more in 1881. Prior to 1880 both John Shale and David Wolf manufactured buggies in Madison, Wisconsin. Then David and Mary Wolf came to Dakota and bought the farm Father lived on, 35-116-54, and Father built the home on his homestead Farm now owned by Alton Wolf. The house of David and Mary Wolf was lived in by Charles and Mabel Wolf after the parents moved to Watertown at 716 E. Kemp. This house later was moved to Grover and is lived in now by Albert Mischke's (1971). The

## SOME REMINISCENCES OF EARLY SOUTH DAKOTA

downstairs bedroom of this house is where Charles Henry Wolf and his daughter, Ethel Wolf Tetzlaff was both born.

I remember the year that the Great Northern Railway from Benson, Minnesota to Huron, South Dakota was graded and the next year the track was laid about a block from our house (Alton Wolf's house) the year of 1888, I was seven years old.

I also remember the Big Blizzard, which came up suddenly one January forenoon. My Father, David Wolf, and John Shale were enroute home from Watertown when it struck with dense snow so thick it was impossible to see the road by lucky they were near an empty building, so they put the horses in the kitchen and were saved from freezing. The Storm lasted all night but the next morning it was nice and bright. This was near the Toby slough South of Lake Kampeska. I believe the date was January 12, 1888.

BIRTH DATES OF SHALE/WOLF FAMILY	
Great, Great, Great Grandfather	About 1695
Joseph, Great, Great Grandfather	1749
Fred, Friederich Scheel, Great Grandfather	1775
Chris Shale, Grandfather	1817
Mary Shale (Mrs. David Wolf) and sister of Lizzie Seipp	1853-1949
Charles Henry Wolf, third son of Mary and David Wolf	1884-1949
Ethel Marie Wolf Tetzlaff, daughter of Mabel and Chas Wolf	1909
JoAnn Tetzlaff Lee, first daughter of Ethel and Orlan Tetzlaff	1934
Jeanne Tetzlaff Barker, second	1936
Joyce Tetzlaff Battern, third	1940

## SOME REMINISCENCES OF EARLY SOUTH DAKOTA

Charles Alton Wolf, son of Mabel and Chas Wolf	1918
Janis Wolf-Pittel, first child of Charles (Alton) Wolf and Julia Henrikson Wolf	1948
Marilyn Wolf, second	1950
Charles Wolf, Jr., third	1952
David Wolf, fourth (twin of Charles, Jr.)	1952-1952
Barbara Wolf, fifth	1954
Joleen Wolf Burke, sixth	1956
Deanna Wolf McQuilkin, seventh	1959
Steven Wolf, eighth child of Charles (Alton) Wolf and Julia Henrikson Wolf	1964

In a Grammar Book was a letter from my Great Grandfather Ferdinand Friederich Scheel (pronounced Shale, as the E in German is pronounced A). I will now start with my Great Grandfather, Fred, Friederich, who learned the brick laying business from his grandfather but no name given.

Written by Ralph Seipp, 90 years